



COVID-19 UPDATE

We have currently moved our training online but will be adding in-person options when it is deemed safe.

2021

- **Training**
- **Coaching**
- **Consulting**

A note from the president:

“In these challenging times we are on a learning curve adjusting to a new normal and exploring new paths.

Although it was challenging at first cancelling all in-person services, we have discovered so many advantages to online learning that we have extended and expanded our remote program into 2021.

As soon as deemed safe we will be adding in-person training options. We can't wait to see everyone!

Check out our new program and stay safe.

Table of Content



- 1. **About TerraEx Group** p. 03
- 2. **Who we are** p. 04
- 3. **TerraEx Services** p. 05
- 4. **Themes and Disciplines** p. 06
- 5. **REMOTE PROGRAM** p. 07
- 6. **Custom Training** p. 08
 - 1. **Modular Training** p. 08
 - 2. **Theme Packages** p. 10
 - 3. **Foundation Training** p. 11
- 7. **Training Agenda** p. 12
 - 1. **Price Model** p. 13
 - 2. **Public Calendar** p. 14
 - 3. **Discipline Courses** p. 15
 - 4. **Multi-disciplinary Workshops** p. 20
 - 5. **Specialty Courses** p. 22
 - 6. **Free webinars** p. 24
- 8. **Support** p. 25
 - 1. **Project Coaching and Help-on-Demand** p. 25
 - 2. **Consulting and Research** p. 26
- 9. **CONTACT** p. 27

About TerraEx Group

Innovative company for high-quality customized Geoscience training, coaching and consulting



Founded in 2017 with the goal to offer a **client-driven and efficient business model** to the energy industry.

Integrated services combining training, coaching and consulting on demand.

Customized solutions specific to client's preferences and challenges.

Unique training format combining online and onsite training and mentoring.

Team efforts - so you can profit from our combined experience and expertise.

Our Clients

Industry – Government - Academics



Who we are

TerraEx Group Core Team

WHAT SETS US APART
is that we collaborate
closely as a team to
amplify our expertise



Catalina Luneburg, PhD
Founder and Director

Structural validation of basins and petroleum systems worldwide

Structural modeling in cross section balancing and 2D/3D time-step restorations, 3D frameworks, fracture prediction, reserve estimates

Held positions at GeoLogic Systems, Midland Valley and Halliburton as well as academics

We also work with a large network of experts on demand



Jim Granath, PhD
Structural Analysis
Extensional/Compressional
Petroleum Play Analysis



Bob Ratliff, PhD
Structural restorations
Cross section balancing
LithoTect expert



Tim Buddin, PhD
Structural Analysis/Restoration
Geomechanical Modeling
Regional to reservoir



Mark Rowan, PhD
Salt Tectonics
Salt styles/kinematics
Passive Margins evolution



John Karlo, PhD
Seal evaluation
Deepwater exploration
Risk Assessment



Steven Boyer, PhD
Structural Interpretation
Evolution fold/thrust belts
Compressional HC systems



Katie Joe McDonough, PhD
Sequence stratigraphy
Stratigraphic basin analysis
E&P play assessment



Erik Scott, PhD
Petroleum Geology
Seismic Int.; Sed. Stratigraphy
Volumetrics and Risk



Peter Flaig, PhD
Fluvial-Deltaic-Shallow Marine
Reservoir Characterization
Ichnology and Paleopedology



Tanya Inks, MsC
Seismic interpretation
(un)conventional Play Analys.
Seismic attributes/anisotropy



Uschi Hammes, PhD
Sedimentology/stratigraphy
Reservoir characterization
Unconvent. Shale Analysis



Margaret Lessinger, PhD
Applied petrophysics
Unconventional reservoirs
Sequence stratigraphy



Sheryl Williams-Stroud, PhD
Fractured reservoirs
Microseismic, mechanics
Stress/strain analysis



Al Lacazette, PhD
Fractured reservoirs
Fluid /rock interaction
Borehole imaging



Amy Fox, PhD
Geomechanics, insitu stress
Wellbore and fault stability
Induced seismicity



Alexei Milkov, PhD
Petroleum System Modeling
Oil & gas geochemistry
exploration risk analysis



Afshin Fathi, PhD
Basin Modeling
Organic geochemistry
Petroleum Systems



David Garner, PhD
Applied Geostatistics
Applied Geomodeling
Reservoir Characterization

TerraEx Services

Design your experience!

Fill your gaps!

- **Customized solutions**
- **Integrated services**
- **Unique formats**
- **Top Quality**

Integrated Model

COACHING

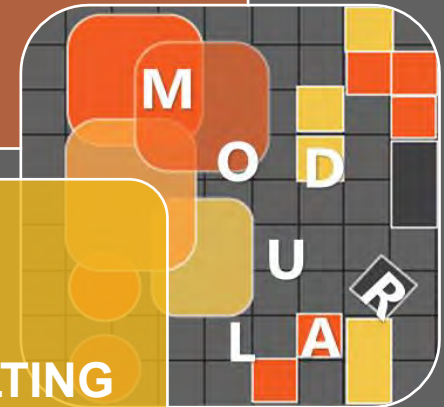
Client Data
Project Coaching
Help on the Go

TRAINING

Modular Training
Inhouse Courses
Public Courses
Foundation Program

CONSULTING

Project Consulting
Research Studies



Themes and Disciplines

Structural Geology and Tectonics
Structural Balancing/Restoration
Subsurface Mapping, QA
Salt Tectonics

Sedimentology
Sequence Stratigraphy
Siliciclastics, Mudrocks,
Carbonates
Depositional Systems

Seismic Interpretation
Seismic Attributes, AVO

Seal Evaluation
Charge and migration

Petroleum Systems
Basin Analysis and Basin Modeling
Petroleum Geochemistry
Petrophysics, Log Analysis

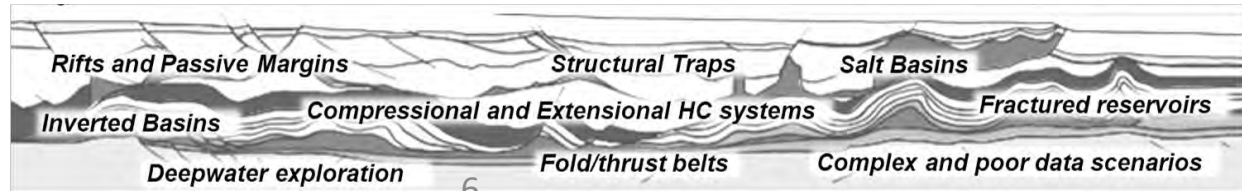
Natural and induced fractures
Geomechanics and Microseismics
Shale reservoirs

Play/Fairway Analysis
Risk Analysis

Geostatistics and Geomodeling



WORLD CLASS STRUCTURE TEAM



REMOTE PROGRAM 2021

CALENDAR



COVID-19 UPDATE

We have currently moved training online but will be adding in-person options when it is safe for everyone.

Our remote program comprises live-online training options as either completely customizable inhouse programs or public/custom scheduled courses and interdisciplinary workshops and schools.

Custom TRAINING

Client-designed, on-demand

1. Modular Training
2. Theme Packages
3. Foundation Program

TRAINING Agenda

Courses and workshops

1. Discipline Courses*
2. Interdisciplinary Workshops*
3. Specialty Courses
4. Free webinars

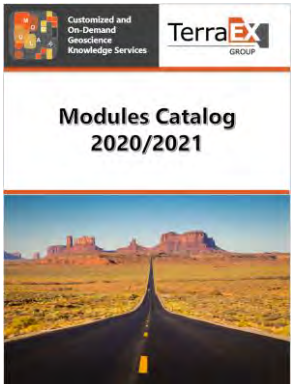
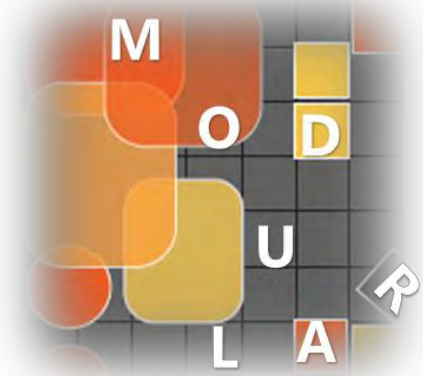
SUPPORT

Coaching/consulting services

- Project Coaching
- On-demand Help
- Consulting Services
- Research studies

1. MODULAR TRAINING

Modular courses are completely custom designed based on client's topics of interest, desired length, structure and timing.



- Choose from > 150 modules in our catalog
- Design your inhouse course OR let us do it for you
- Pay per module for groups up to 25 people

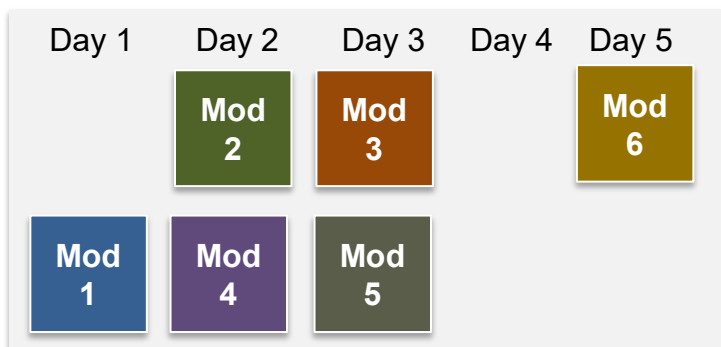


Submit Request

Topic	Basic Modules	Advanced Modules	Case Studies	Software
Geospatial
Remote Sensing
GIS
...

REMOTE Price Options for > 25 participants
 1-5 Modules 850/module
 ≥ 6 Modules 750/module

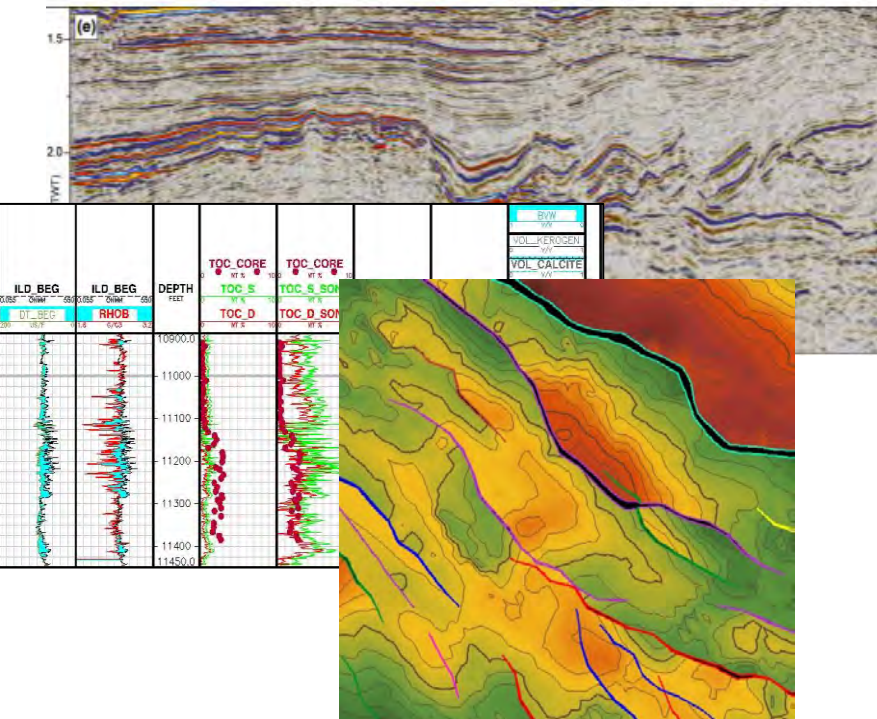
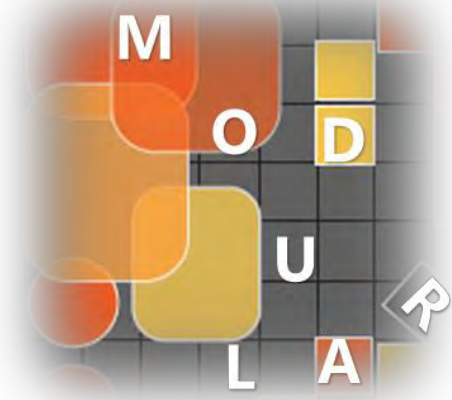
All prices in USD
1 Module = half day of remote training = 3-4 hrs



1. MODULAR TRAINING

Training using client data can be designed per request and with appropriate lead time.

These courses are exclusive to clients including all materials and exercises created with their data.



Client proprietary data can be incorporated in various ways:

1. New modules can be created per client request using proprietary data and/or regional preferences
2. Client data can be integrated into course exercises or examples
3. Mentoring sessions are used to work on client data and apply learned content

2. THEME PACKAGES

We design learning packages for specific exploration targets with online courses combining disciplines and topics covered by our top instructors

Contact us to request a custom-designed package for your exploration target!

Generic examples

Gulf of Mexico Packages

Training Courses

- Tectono-stratigraphic framework of the Gulf of Mexico
- Petroleum systems of the Gulf of Mexico
- Salt Tectonics and case studies

Coaching

- Seismic interpretation
- Cross section balancing

West Africa Passive Margin Packages

Training Courses

- From Rifting to Passive Margins
- Stratigraphic Framework
- Petroleum systems of West Africa
- Salt Tectonics and case studies

Coaching

- Seismic interpretation
- Cross section balancing

Unconventional Reservoirs Packages

Training Courses

- Shale reservoirs
- Core Workshops
- Geomechanics Foundation
- Fracture analysis and Modeling

Coaching

- Log analysis
- Risk assessment

3. FOUNDATION TRAINING

Comprehensive online training program introducing the subject matter topics and practical methods that form the foundation of HC exploration.

“Introduction to Hydrocarbon Exploration”
for early-career professionals

“Conventional workflows”

	Monday	Tuesday	Wednesday	Thursday	Friday
HC Basin	<i>Tectono-stratigraphic framework and the HC trap system</i>				
WEEK 1	Overview exploration workflow	Tectono-strat. frameworks	Seismic Interpretation	Structural Geometries & traps	Q&A
WEEK 2	Sequence Stratigraphy	Depositional Systems	Petroleum Geochemistry	Basin evolution and analysis	Q&A
HC Play	<i>Play analysis and subsurface maps and models</i>				
WEEK 3	Log Analysis and Petrophy. Prop.	Log Interpretation	Subsurface Mapping	Map scenarios and QC	Q&A
WEEK 4	Play and risk Mapping	3D Framework	Cross section validation	Palinspastic Reconstructions	Q&A
HC Prospect	<i>Reservoir charge and migration, risk and volumetrics</i>				
WEEK 5	HC trap formation and concept	Seals, pressure and charge	Geophysics and Seismic attributes	Reservoir Properties	Q&A
WEEK 6	Geostatistical Data Analysis	Prospect Risk and uncertainty	Reserve estimates	Case study: from basin to prospect	Q&A

Foundation training is customized to client’s desired length, structure and topics of interest.

1 Module = 1/2 day

“Unconventional workflows”

	Monday	Tuesday	Wednesday	Thursday	Friday
Basic Unconventional Workflow					
WEEK 1	Unconventional habitats, intra-cratonic basins	Introduction to shale gas/oil play analysis	Unconventional basin analysis	(In)organic geochemistry	Q&A
WEEK 2	Logs and image analysis	Petrophysics of mud rocks	Basic unconventional geomechanics	Natural fractures & fracture modeling	Q&A
Advanced Unconventional Workflows					
WEEK 3	Mud rock sedimentology/ stratigraphy	Tight carbonate reservoirs	Reservoir geochemistry	Structural core logging & interpretation	Q&A
WEEK 4	Structural/geo-mechanical bore hole imaging	Advanced unconventional geomechanics	Fracture modeling & fractured reservoirs	Unconventional risk & reserves analysis	Q&A



1. Discipline Courses
2. Multi-disciplinary Workshops
3. Specialty Courses
4. Free Webinars

CALENDAR

January	February	March	April
1	1	1	1
2	2	2	2
3	3	3	3
4	4	4	4
5	5	5	5
6	6	6	6
7	7	7	7
8	8	8	8
9	9	9	9
10	10	10	10
11	11	11	11
12	12	12	12
13	13	13	13
14	14	14	14
15	15	15	15
16	16	16	16
17	17	17	17
18	18	18	18
19	19	19	19
20	20	20	20
21	21	21	21
22	22	22	22
23	23	23	23
24	24	24	24
25	25	25	25
26	26	26	26
27	27	27	27
28	28	28	28
29	29	29	29
30	30	30	30
31	31	31	31

Choose a course from our public schedule or from our experts' specialties and chose from our price options

1. CHOOSE COURSE

Select one of our scheduled public course or from our experts specialties.



- Discipline Courses**
- see public calendar
- Multi-disciplinary Workshops**
- see public calendar
- Specialty Courses**



2. CHOOSE OPTION

Choose an option for your group size and preferences.



- Single Participant**
Regular or discount
- Multi-client**
for small groups up to 5 participants and open to other clients.
- Inhouse**
exclusive for large groups up to 25 participants

[See new options](#)

NEW PRICE MODEL

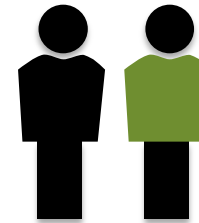
Save big on small and large groups

Every scheduled discipline course and interdisciplinary workshop can also be custom-scheduled as multi-client or inhouse course.

- *discount*
- unemployed,
 - academics
 - > 1 course

Single Participant

1 participant
regular / *discount**



> public schedule

Multi-client Option

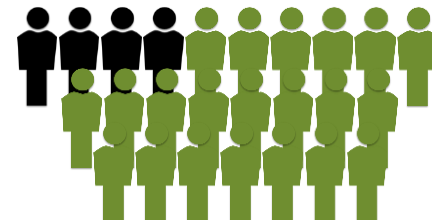
Small group
< 5 participants
pay for 3+



> public or custom schedule

Inhouse Option

Large group
< 25 participants
pay for 4+



> custom schedule

1. Discipline Courses

2. Interdisc. Workshops

4. Free Webinars

CURRENT REMOTE Public Calendar 2021

Online Calendar



TRAINING Agenda

Dates are subject to change and more courses may be added

January

S	M	T	W	T	F	S
					1	2
3	4	5	6	7	8	9
10	Guide to volumetrics					16
17	Sweet spots Shale					23
24	Structural Validation				FW	30
31						

February

S	M	T	W	T	F	S
		Prospect Seal failure				6
7	Geomechanics					13
14	15	Borehole	18	19	20	
21	Seismic Interpret				FW	27
28						

March

S	M	T	W	T	F	S
		Seismic Interpret				6
7	Seismic Interpret					13
14	15	16	17	18	19	20
21	22	23	24	25	FW	27
28	Fracked reservoirs					

April

S	M	T	W	T	F	S
		Clastic Seq. Strat.				3
4	LithoTect Modeling					10
11	Petroleum Systems					17
18	Risk & Volumes					24
25	Geochemical Tools				FW	
	Carbonate Seq Strat.					

May

S	M	T	W	T	F	S
						1
2	WS Passive Margins					8
9	WS Passive Margins					15
16	Geomodeling					22
23	24	25	26	27	FW	29
30	31					

June

S	M	T	W	T	F	S
		1	2	Faults&Frac		5
6	7	Prospect		10	11	12
13	14	Thrust B.		17	18	19
20	Extensional Basins				FW	26
27	28	29	30			

July

S	M	T	W	T	F	S
				1	2	3
4	5	6	7	8	9	10
11	12	13	14	15	16	17
18	19	20	21	22	23	24
25	26	27	28	29	30	31

August

S	M	T	W	T	F	S
1	2	3	4	5	6	7
8	9	10	11	12	13	14
15	16	17	18	19	20	21
22	23	24	25	26	FW	28
29	Advanced LithoTect					

14

September

S	M	T	W	T	F	S
			1	2	3	4
5	6	7	X-section		10	11
12	Clastic Seq. Strat.					18
19	Structural Geology				FW	25
26	27	28	29	30		

October

S	M	T	W	T	F	S
					1	2
3	Carbonate Seq Strat.					9
10	Prospect Seal failure					16
17	Seismic Interpret					23
24	Seismic Interpret				FW	30
31						

November

S	M	T	W	T	F	S
		Seismic Interpret				6
7	Structural Validation					13
14	Guide to volumetrics					20
21	22	23	24	25	26	27
28	29	30				

December

S	M	T	W	T	F	S	
		WS Passive Margi				FW	4
5	WS Passive Margins					11	
12	13	Faults&Frac		6	17	18	
19	20	21	22	23	24	25	
26	27	28	29	30	31		

1. DISCIPLINE COURSES

Subject matter courses on background content and practical applications to the HC industry

5-Session Course (five sessions)

2-Session Course (two sessions)

1 online Session = 3.5 hrs

**Register for a public course
OR
schedule your own small or
large group course**

*** In-person Option**

3-day in person courses will be scheduled beginning of the year. Details will follow.

Remote Price Options

In-person 3-day Course Option*

	5-session	2-session	
Single Participant			
• Regular price for one participant	975	425	1,900
• Discount price for one participant	900*	375*	1,750*
Multi-client Option			
• <u>Group price for up to 5 participants from one company</u>	3,250	1,400	5,950
• Open to other clients			
Inhouse Option			
• <u>Group price for up to 25 participants</u>	4,250	1,700	7.950
• Exclusive to your company			

- Remote courses are taught in half-day online sessions Mon-Fri (5 sessions) or Tue-Wed (2 sessions) either am or pm.
- Most courses are basic to intermediate level for anyone working in E&P
- Courses will adjust to participants levels and goals as much as possible



Register at our website

**discount price applies to currently unemployed, academics and booking more than one course*



Jan 11-15 and Nov 15-19, 2021

“A Practical Guide to Volumetrics and Risking” by Erik Scott, PHD

This course covers considerations needed to calculate in-place hydrocarbons and the chance of finding it. The mechanics of calculating volumes will be covered, however the focus is on understanding how to determine appropriate rock and fluid property input ranges, implications of the different methods of volume calculation and how the output volumes are modified.

5 sessions live online (3.5 hrs/session) Mo-Fri 8-11:30 CT	975/900* participant 3,250 multi-client 4,250 inhouse
--	---

Jan 18-22, 2021

“Identification of sweet spots in shale oil/gas plays: best practices in analyzing shale oil/gas plays” by Ursula Hammes PhD

How stratigraphic and depositional processes influence regional correlations and facies variations of organic-rich mudrocks with respect to calcareous, siliceous and clay-rich shales. Apply sequence stratigraphic principles to identify best organic-rich and frackable intervals.

5 sessions live online (3.5 hrs/session) Mo-Fri 8-11:30 CT	975/900* participant 3,250 multi-client 4,250 inhouse
--	---

Jan 25-29 and Nov 8-12, 2021

“Structural Validation and Cross-section Balancing” by Catalina Luneburg, PhD

This course combines seismic interpretation and structural validation techniques to create balanced interpretations from the start. Interpretation pitfalls and methods are discussed to analyze and validate structural features such as faults and folds by predicting a valid fault trace and hangingwall shape using manual tools.

5 sessions live online (3.5 hrs/session) Mo-Fri 8-11:30 CT	975/900* participant 3,250 multi-client 4,250 inhouse
--	---

Feb 1-5 and Oct 11-15, 2021

“How to risk exploration prospect seal failure” by John F. Karlo, PhD

Top seal is not usually a yes-no question of risk but is much more a question of how much column a seal can retain. Fault seal can occur by a variety of mechanisms each with different controls on column heights. Workshop details quantitative assessment of top and fault seal mechanisms and how to apply them to estimating prospect volumes.

5 sessions live online (3.5 hrs/session) Mo-Fri 8-11:30 CT	975/900* participant 3,250 multi-client 4,250 inhouse
--	---

Feb 8-12, 2021

“Geomechanics for Today’s Oil and Gas Industry” by Amy Fox, PhD

In order to dig into the important topics of today, it is important to understand the basic elements of geomechanics and to examine how the discipline has evolved over time. This workshop teaches the data types and workflows for building a geomechanical model, which can then be applied to exploration, drilling, completions and full field development.

5 sessions live online (3.5 hrs/session) Mo-Fri 8-11:30 CT	975/900* participant 3,250 multi-client 4,250 inhouse
--	---

Feb 16-17, 2021

“Fracture Systems and Reservoir-Scale Structural Geology from Borehole Images” by Al Lacazette, PhD

Borehole images provide detailed information on reservoir fractures, reservoir neostress (present-day stress), reservoir-scale structural geology that can control fracture development, sedimentary facies and structures, and other features. The course will focus on basic and advanced methods to characterize natural and induced fractures.

2 sessions live online (3.5 hrs/session) Tue-Wed 8-11:30 CT	425/375* participant 1,400 multi-client 1,700 inhouse
---	---



March 29–April 1, 2021

“Fracked Reservoir DFN Modeling” by Sherilyn Williams Stroud, PhD

How to use microseismic data to build a fracture network model, interpret structural features, and generate fracture properties for reservoir simulation. Learn about aspects of structural analysis related to natural fracture development, induced and reactivated fracturing from hydraulic fracture stimulation, and state of stress.

5 sessions live online (3.5 hrs/session) Mo-Fri 8-11:30 CT	975/900* participant 3,250 multi-client 4,250 inhouse
--	---

April 5-9, 2021

“Structural Modeling with LithoTect Software” by Catalina Luneburg, PhD

This short workshop provides an overview of the tools and techniques for balancing and restoring cross sections using LithoTect Software such as setting up the project and data base, basic interpretation tools such as fault prediction and structural modeling tools and various restoration methods.

5 sessions live online (3.5 hrs/session) Mo-Fri 8-11:30 CT	975/900* participant 3,250 multi-client 4,250 inhouse
--	---

April 5-9 and Sept 13-17, 2021

“Sequence Stratigraphy from the Ground Up – Every Day Applications” by Katie Joe McDonough, PhD

This course introduces sequence stratigraphic concepts by reviewing sedimentologic processes and the resulting facies, depositional systems and cyclicity. For better predictability at the regional and reservoir scale, ground your interpretation in sequence stratigraphy. Exercises reinforce recognition of vertical and lateral stratigraphic signatures.

April 12-16, 2021

“Petroleum Systems and Basin Analysis” by Afshin Fathi, PhD

The aim of this course is to introduce applications of organic geochemistry data in basin analysis studies and its applications in petroleum exploration; it stresses the importance of basin evolution to petroleum generation, migration and accumulation. You will learn to evaluate petroleum systems and their hydrocarbon potential.

5 sessions live online (3.5 hrs/session) Mo-Fri 8-11:30 CT	975/900* participant 3,250 multi-client 4,250 inhouse
--	---

April 19-23, 2021

“Risks and Volumes Assessment for Conventional and Unconventional Plays and Prospects” by Alexei Milkov, PhD

The course enables participants to transform qualitative geological descriptions of plays and prospects into quantitative success-case and risked volumetric models. Learnings help to evaluate the geological probability of success (PoS) for exploration plays, segments, prospects, wells and portfolios and to assess the range of petroleum volumes in exploration projects.

5 sessions live online (3.5 hrs/session) Mo-Fri 8-11:30 CT	975/900* participant 3,250 multi-client 4,250 inhouse
--	---

April 26-30 and Oct 4-8, 2021

“Carbonate Sequence Stratigraphy – Built on Sedimentology” by Katie Joe McDonough, PhD

This workshop explores sedimentologic processes and cyclic facies successions in carbonate environments. How best to exploit this cyclicity to achieve our goal of reservoir predictability? Exercises emphasize and reinforce building the stratigraphy from a sedimentologic foundation.

5 sessions live online (3.5 hrs/session) Mo-Fri 8-11:30 CT	975/900* participant 3,250 multi-client 4,250 inhouse
--	---

1. DISCIPLINE COURSES **Public Schedule**



TRAINING Agenda

[Visit our website to register and learn more](#)

April 26-30, 2021

“Geochemical tools to characterize shale oil/gas plays: organic and inorganic geochemical techniques to identify sweet spots” by Ursula Hammes, PhD

Inorganic geochemical techniques will teach the instrumentation used to generate inorganic data used to identify favorable frac intervals and compare to petrophysical logs (e.g., XRD, ICP, XRF instruments).

5 sessions live online (3.5 hrs/session) Mo-Fri 8-11:30 CT	975/900* participant 3,250 multi-client 4,250 inhouse
--	---

May 17-21, 2021

“The Role of Geomodeling in the Multi-disciplinary Team” by David Garner

The concepts to models, related workflows and practices embody technical themes that influence strategies for integrated subsurface teams and their economic decision making. The seminar will provide a discussion of geomodeling processes and topics in their integrated context related to general forecasting workflows and will include a discussion on improving the effectiveness of geomodeling within teams.

5 sessions live online (3.5 hrs/session) Mo-Fri 8-11:30 CT	975/900* participant 3,250 multi-client 4,250 inhouse
--	---

June 3-4 and Dec 14-15, 2021

“Interpreting Fault and Fracture networks” by Catalina Luneburg, PhD

This short course introduces the concepts of faulting and fracturing from the mechanics to the development of fault and fracture patterns in a variety of tectonic settings. We will discuss methods to predict fractures and to interpret subseismic resolution subsidiary faults.

2 sessions live online (3.5 hrs/session) Tue-Wed 8-11:30 CT	425/375* participant 1,400 multi-client 1,700 inhouse
---	---

June 8-9, 2021

“The Practice of Maturing a Prospect” by Farrukh Ahmad, PhD

This short course provides a practical understanding of the processes that make prospects fully ready to get management’s approval for drilling. It gives a thorough understanding of what is meant by prospect maturation and why it is needed before drilling decisions. It explains further the maturation steps that ought to be taken diligently.

2 sessions live online (3.5 hrs/session) Tue-Wed 8-11:30 CT	425/375* participant 1,400 multi-client 1,700 inhouse
---	---

June 15-16, 2021

“Overview of Typical Fold- and Thrust Belts” by Steven Boyer, PhD

This course provides an overview of the typical thrust-belt architecture and the structural variation and complexity. We take a critical look at the complex deformational history of thrust-belt structures and implications for the validity of cross-section balancing. We also analyze the implications of fold- and thrust belt mechanics and kinematic for HC systems.

2 sessions live online (3.5 hrs/session) Tue-Wed 8-11:30 CT	425/375* participant 1,400 multi-client 1,700 inhouse
---	---

June 21-25, 2021

“Fundamentals of Extensional Basins” by James W. Granath, PhD

Continental extensional terranes or “rifts” are some of the most hydrocarbon productive provinces in the world. This workshop focusses on the seismic expression of features in continental rifts and the basics of extensional deformation, i.e. normal faulting, and the character of the rift structural style.

5 sessions live online (3.5 hrs/session) Mo-Fri 8-11:30 CT	975/900* participant 3,250 multi-client 4,250 inhouse
--	---



[Visit our website to register and learn more](#)

Aug 30-Sept 3, 2021

“Advanced Structural Modeling with LithoTect Software” by Catalina Luneburg, PhD

This short workshop provides an overview of the advanced tools and techniques for balancing and restoring cross sections using LithoTect Software. We will introduce various methods such as backstripping, multi-step restoration and balancing techniques in a variety of tectonic settings.

5 sessions live online (3.5 hrs/session) Mo-Fri 8-11:30 CT	975/900* participant 3,250 multi-client 4,250 inhouse
--	---

Sept 8-9, 2021

“Quick guide to Cross-section Balancing” by Catalina Luneburg, PhD

This short course provides a quick and simplified overview of the practices of cross-section balancing. What are the concepts behind balancing, what are the techniques and mainly what are the benefits for our structural interpretation? Manual balancing methods are applied in real-world scenarios.

2 sessions live online (3.5 hrs/session) Tue-Wed 8-11:30 CT	425/375* participant 1,400 multi-client 1,700 inhouse
---	---

Sept 20-24, 2021

“Structural Geology applied to the HC industry” by Catalina Luneburg, PhD

This course provides an overview of the Structural Geology concepts and methodologies relevant to hydrocarbon E&P workflows. Starting with the basic theories of stress, strain and mechanics, we apply the concepts and learn interpretation techniques for various HC tectonic settings and their structural development and geometric patterns.

5 sessions live online (3.5 hrs/session) Mo-Fri 8-11:30 CT	975/900* participant 3,250 multi-client 4,250 inhouse
--	---

All prices in USD

2. Multi-disciplinary WORKSHOPS and SCHOOLS

NEW!

TRAINING Agenda

Contact us to schedule

Free Webinar Preview
FRIDAY December 4th, 2020



Feb 22 – March 11 and Oct 18 – Nov 5, 2021

Seismic Interpretation School

15 sessions comprehensive workshop on foundation, methods and applications

May 03– 14 and Nov 29-Dec 10, 2021

Passive Margins (w. Africa)

10 sessions comprehensive workshop on structure, stratigraphy, petroleum systems

1 online Session = 3.5 hrs

- New **interdisciplinary** workshops and schools taught by a **team of top experts** in their areas of expertise.
- Live-taught **daily online sessions** consisting of presentations, group exercises, discussion and real-world case studies.

Remote Price Options

Single Participant

- Regular price for one participant
- Discount price for one participant

Seismic Int. School

2,225
2,125*

Passive Margins

1,850
1,750*

Multi-client Option

- Group price for up to 5 participants from one company
- Open to other clients

7,800

6,500

Inhouse Option

- Group price for up to 25 participants
- Exclusive to your company

9,000

7,500

* In-person Option

Additional in-person workshops may be scheduled in Q2. Details will follow.



Register at our website

**discount price applies to currently unemployed, academics and booking more than one course*

All prices in USD

2. Multi-disciplinary WORKSHOPS and SCHOOLS



Feb 22 – March 11 and Oct 18 – Nov 5, 2021

Seismic Interpretation School

Comprehensive interdisciplinary training program on concepts and techniques of seismic interpretation including imaging techniques, various structural and stratigraphic settings and real world case studies of HC provinces.

Course Agenda

Week 1: Foundation of Seismic Imaging

seismic wave propagation, data acquisition, seismic processing, migration, imaging techniques, AVO, seismic attributes, interpreting horizons and faults

Week 2: Structural Interpretation and Styles

Structural settings and petroleum systems, analysis and validation, extensional and compressional tectonics, strike-slip, inversion and salt tectonics

Week 3: Seismic Sequence Stratigraphy and Case Studies

Seismic sequence stratigraphy and facies analysis, depositional systems, cyclicity, case studies of seismic lines from passive margins (W.Africa), northern GOM and other examples

Instructors: Erik Scott, Katie Joe McDonough, John Karlo, Catalina Luneburg, TBD

Length: 12 sessions (3.5 hrs/sessions) live online

Logistics: Taught Mon-Thu, 8 – 11:30 am over three weeks

Level: Basic - Intermediate level. For any geoscientist with basic geology understanding

May 3– 14 and Nov 29-Dec 10, 2021

Passive Margins (focus W. Africa)

Specialized interdisciplinary workshop on rifting and passive margin evolution, basin analysis and petroleum systems as well as the role of salt tectonics and delta systems in passive margins with a focus on South Atlantic and West Africa.

Course Agenda

Week 1: Tectono/Stratigraphic Framework

Rift to passive margin development, extensional exhumation models, seq. stratigraphic and structural architectures, extensional fault systems, sedimentary basins, petroleum systems

Week 2: Passive Margin Features and Examples

the role of salt tectonics, gravity-driven tectonics, deep water compressional systems, progradational delta systems, case studies from Congo, Angola, Nigeria etc.

Instructors: James Granath, Katie Joe McDonough, John Karlo, Catalina Luneburg, TBD

Length: 10 sessions (3.5 hrs/sessions) live online

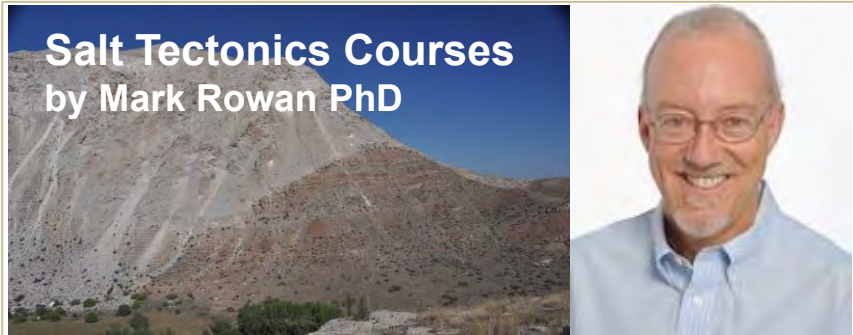
Logistics: Taught Mon-Fri, 8 – 11:30 am over two weeks

Level: Medium-Advanced level. For geoscientist with basic knowledge in the related disciplines

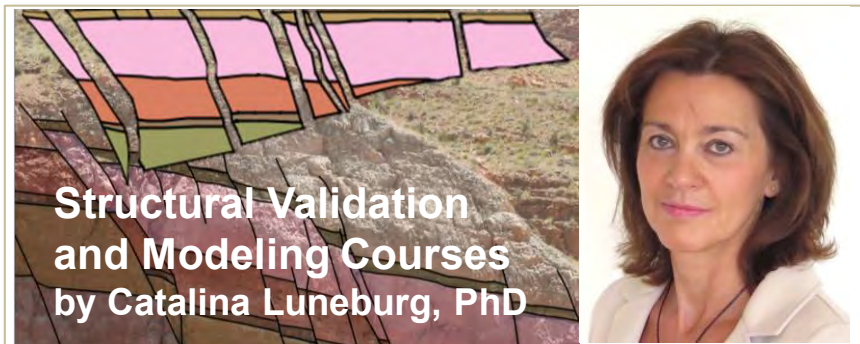
3. SPECIALTY COURSES

Our experts 'five-star' offerings

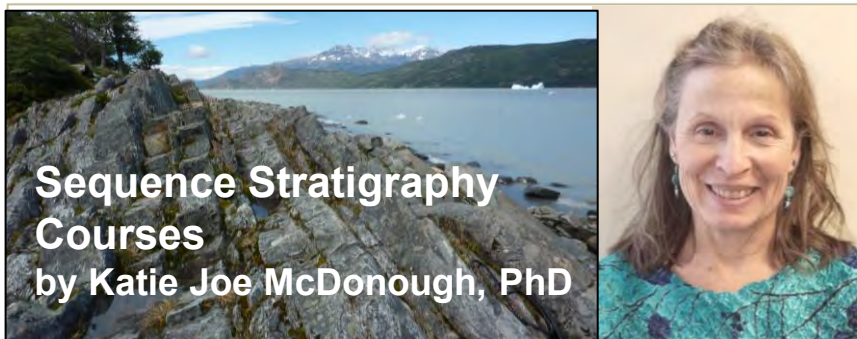
Contact us for scheduling and pricing



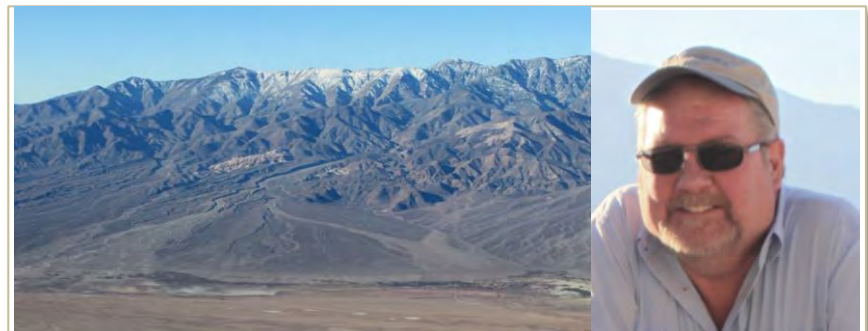
- 3 days – **Practical Salt Tectonics**
- 3 days – **Salt Tectonics of the Gulf of Mexico**
- 3 days – **Salt Tectonics of passive margins**
- 2 days – **Salt Tectonics of the North Sea**
- 2 days – **Salt Tectonics for geophysicists**



- 3 days – **Structural Modeling with LithoTect Software (basic or advanced options)**
- 3 days – **Structural Analysis and Validation in HC settings**
- 2 days – **Cross section Balancing Techniques**



- 3 days – **Sequence Stratigraphy from the Ground Up – Every Day Applications**
- 3 days – **Carbonate Sequence Stratigraphy – Built on Sedimentology**



- 3 days – **Fundamentals of Extensional Basins**
seismic expression of features in continental rifts and the basics of extensional deformation
- 4 days – **Structural Validation of Extensional HC settings**
Structural analysis of extensional structures

3. SPECIALTY COURSES

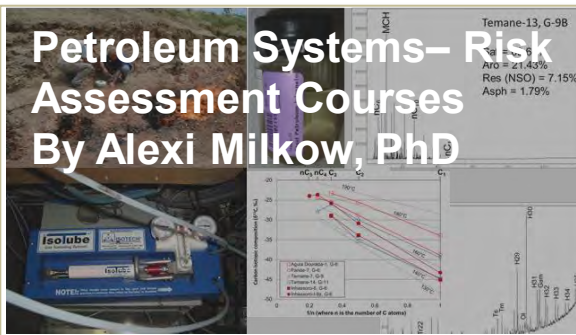
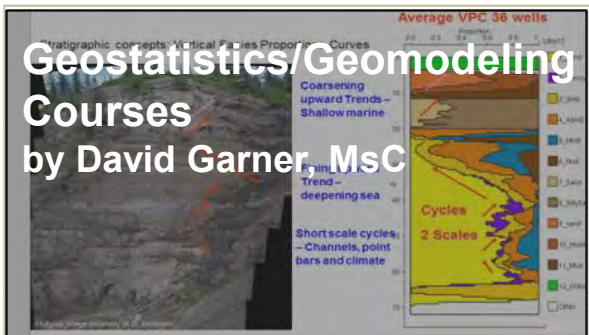
Our experts 'five-star' offerings

Contact us for scheduling and pricing



2 days – **Getting to Fractures from Microseismic and Geomechanics**
Structural analysis related to natural fracture development, induced and reactivated fracturing from hydraulic fracture stimulation, and impact of stress states

2-5 days – **Core Workshop in Austin, Houston or client's offices**
Characterization of shale oil/gas plays e.g. Eagle Ford, Haynesville, Bossier, Bakken, Barnett, Wolfcamp and others



3 days – **Fundamentals of Geostatistics**
2 days – **Basics of Geomodeling**
3 days – **Advanced Geomodelings**

3 days – **Petroleum Fluids and Source Rocks in E&P Projects**
3 days – **Risks and Volumes Assessment for Conventional and Unconventional Plays and Prospects**
1 day – **Interpretation of Natural Gases**

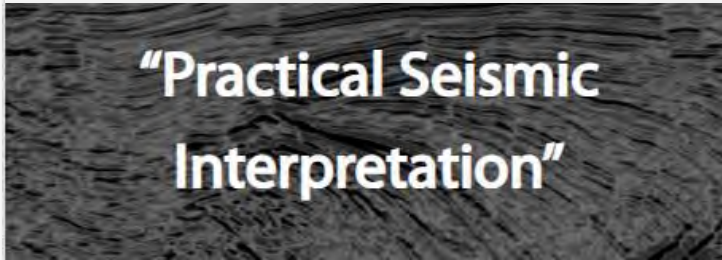
4. FREE webinars

UPCOMING WEBINAR

Preview of our Seismic Interpretation School coming up Feb 22 – March 11, 2021.

[Register here](#)

FRIDAY December 4th, 2020
at 1-2 pm, CT (Houston)



A comprehensive review of seismic interpretation from imaging and interpretation techniques, to seismic features in a variety of tectono-stratigraphic settings all based on real-world examples and case studies.



TerraEx Team: Katie Joe McDonough, Erik Scott, John F. Karlo, Catalina Luneburg

We are offering free webinars on current topics by one of our top experts

EVERY LAST FRIDAY OF THE MONTH

Access our recordings if you missed a webinar.

FRIDAY October 30, 2020

“How to Attack your Structural Interpretation”
by Catalina Luneburg, PhD



Keep checking our website for more upcoming webinar

[Visit Here](#)

- **Our experts coach you through a project by providing their expertise and experience and guiding your interpretation and modeling workflows**
- **Project Coaches teach content and mentor on project-specific topics to improve efficiency and quality outcome**



HELP ON-DEMAND

- **On-demand help is client support for questions, advice and support on project or other topics per agreed hours time frame**

Consulting Services examples:

- Subsurface interpretation and validation
- Complex geological structural analysis
- Geometrically balanced 2D and 3D models
- Structural restorations and forward models
- Time-step restorations and Backstripping
- Burial history modeling
- Salt-related analysis and restorations
- Analysis of curvature, dip and strain distributions
- Fracture analysis and fracture prediction
- Fault sealing characteristics
- Field Mapping and structural analysis
- Hydrocarbon migration pathways and accumulation zones
- Basin Analysis and Basin Modeling

Software Proficiency:

DecisionSpace, Petrel, IHS, SMT Kingdom, ArcGIS, Petra, LithoTect, MOVE, Isatis, WellCad, IESX, Jewel Suite, GeoScout, GeoCarta, GeoSmart, Vinland, Geoprobe, Minestis, PetroMod

Outsource your E&P projects and research studies to a team of top-quality experts

RESEARCH STUDIES

We conduct research on your exploration areas and provide you with a synthesis report and list of literature, maps and/or other materials.





Phone/text:.....+ 303 319 3043

Email:.....info@terraexgroup.com

Website:.....www.terraexgroup.com

Contact

US